

THE TERRIBLE TRIO

The (not so) Superheroes

SWAPNA HADDOW

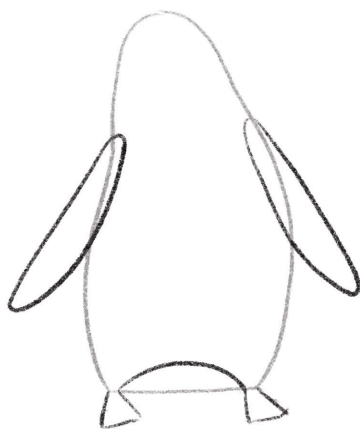
illustrated by MINKY STAPLETON

Draw Marge!

Use Minky's step by step instructions below to draw **Marge**.
Use a pencil and have an eraser handy in case you make a mistake!



1. Draw an avocado shape with a flat bottom.



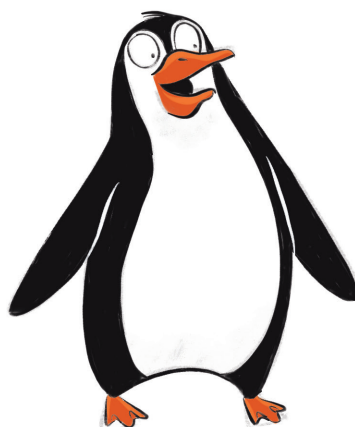
2. Draw a half circle between the two points at the bottom. Add two ellipses for her flippers. And add 2 little triangles for her feet.



3. Add two ellipses for her eyes and two triangles for her beak as indicated.



4. Add her markings as shown following the outside lines.



5. Now use a pen and go over your pencil lines. Remember to leave a white line to show where her flipper is. Colour in her beak and flippers and you're all done!

